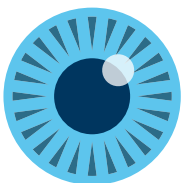


TREQ-BLUE



**“Unmatched purity
of Vitreq
surgical liquids.”**

Vitreco a company of:



BVI



Vitreco

Anterior surgical liquids

Treq-Blue is developed to stain the anterior lens capsule for cataract surgery in the case of a reduced red fundus reflex and poor visualization of the rhexis rim.

Treq-Blue

Poor visualization in this clinical situation renders disruption of the capsulorhexis more likely, with the associated complications of this. Treq-Blue stains the anterior lens capsule clearly blue. The dye provides excellent visualization for better control of the capsulorhexis procedure. Clear visualization helps prevent surgical complications.



Treq-Blue

Art.No.: SL00.A01
0,5 ml syringe (box/10, Sterile)



Packaged box/10, Sterile

Treq-Blue and smooth injection

Treq-Blue is packaged in glass syringes with a siliconized plunger for smooth intraocular injection procedure.

For cataract surgery – stains anterior capsule in reduced red fundus reflex and poor visualization of rhexis rim.

- Clear blue staining of anterior capsule, strong differentiation with underlying tissue.
- Clear visualization of rhexis rim to avoid surgical complications.
- Clear outline of rhexis rim during complete cataract procedure.
- Ultra purified staining material minimizes potential toxic effect and increases staining effect.
- Syringe packaged, ready-for-use.
- Consistent performance due to safe and efficient production.
- Produced according to EN ISO 13485-2012.

Treq-Blue and purity

Treq-Blue is the purest of all dyes tested!

Treq-Blue is produced from highly purified Trypan Blue with a concentration of 0,06% (0,6 mg/ml). Vitrea has developed a new, unsurpassed purification process to effectively remove the colored and uncolored impurities in an elaborate two-step purification process. Ultra-purified dye increases safety and staining effect.

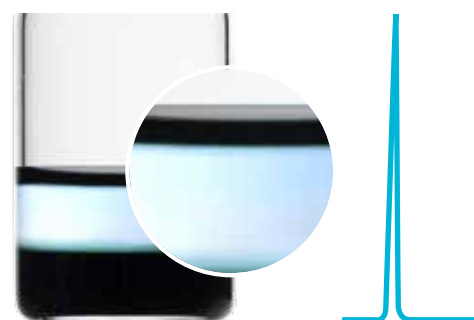
Dye	Impurities measured at 530 nm	Purity
Treq-Blue	2%	98%
Competition		
Competitor 1 Western Europe	5%	95%
Competitor 2 Western Europe	13%	87%
Competitor 3 Southern Europe	20%	80%
Competitor 4 India	18%	82%

Conclusion

Treq-Blue is the purest of all dyes tested!

Competitor 1 contained twice as much impurities (measured at 530 nm) as Treq-Blue. All other dyes contain between six and nine times as much impurities as Treq-Blue.

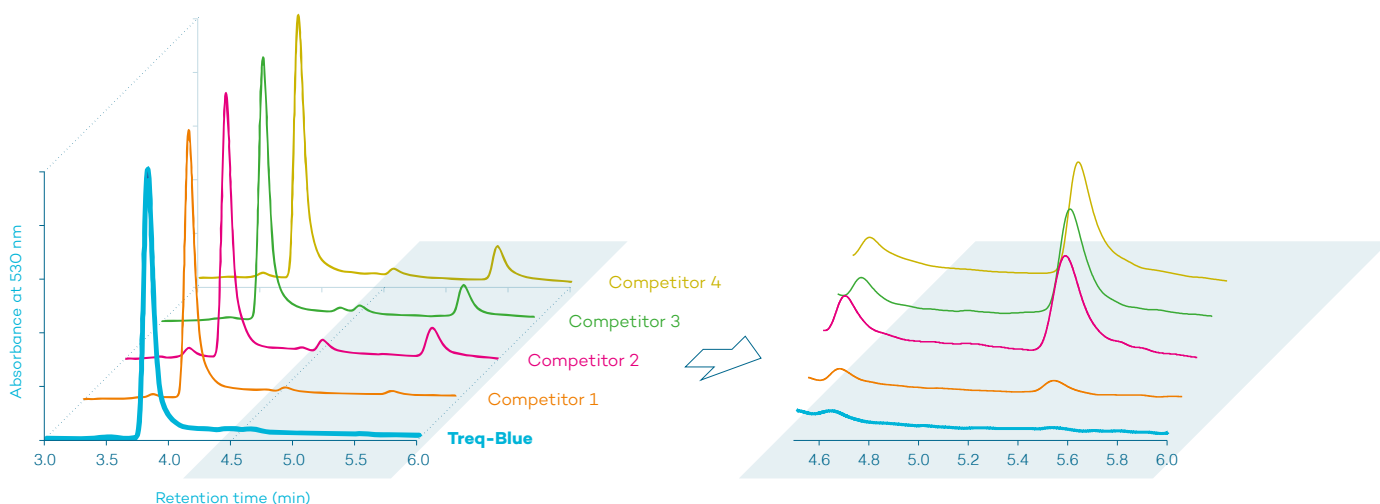
Chromatography show the absence of foreign dyes in Treq-Blue



Treq-Blue



Competition



Test specifications

Purity of the dyes was monitored by HPLC chromatography, carried out at Department of Life Sciences and Chemistry, Jacobs University Bremen, Bremen, Germany.

A C18 Gravity column from Macherey-Nagel was used. The eluent was a linear gradient from 0.02 M phosphate buffer pH = 6.0 to 100% acetonitril. Flow rate was 1.0 mL/min, and detection at 530 nm (absorption for pink dye impurities). Chromatography traces were integrated with the Clarity Lite software, using identical thresholds and a valley-to-valley baseline. The areas of the integrated peaks were summed up, and the sums of the percentages of the minor peaks are listed in the above table.



ISO Certification

Vitreu's quality system complies with the international quality and regulatory requirements and is certified by the Notified Body DQS Medizinprodukte GmbH, according to international standard ISO 13485 Medical devices – Quality management systems – Requirements for regulatory purposes.

CE Certification

The Vitrea medical devices are certified according to the medical device directive 93/42/EEC.

European Countries

To order Vitrea products in Europe contact a Customer Service Representative via e-mail, telephone or fax.

Beaver-Visitec International, Ltd

85B Park Drive, Milton Park
Abingdon, Oxfordshire
OX14 4RY, United Kingdom
E: ordersuk@bvimedical.com
T: 44.1865.601.256 *Option 3*
F: 44.1865.595.761

Belgium

E: bestellingen@bvimedical.com
T: 32.52.280518 *Option 3*
F: 32.52.890243

France, Luxembourg

E: commandes@bvimedical.com
T: 334.85880033 *Option 3*
F: 334.88714057

Germany, Switzerland, Austria

E: bestellungen@bvimedical.com
T: 49622.16479854 *Option 3*
F: 49622.13929883

Italy

E: ordini@bvimedical.com
T: 39.02.89877520 *Option 3*
F: 39.02.44386868

Netherlands

E: bestellingen@bvimedical.com
T: 31.20808.3202 *Option 3*
F: 31.20203.1293

Spain

E: ordenes@bvimedical.com
T: 34.91.1230335 *Option 3*
F: 34.91.1849957

United Kingdom, Eire

E: ordersuk@bvimedical.com
T: 44.1865.601.256 *Option 3*
F: 44.1865.595.761

All Other Regions

E: ordersrow@bvimedical.com
T: 44.1865.601.256 *Option 3*
F: 44.1865.595.761

Vitreu Headquarters

Seggelant-Noord 2
3237 MG Vierpolders
The Netherlands
E: info@vitrea.com
T: 31.181.745090
F: 31.181.478583



Vitreu a company of:



vitrea.com bvimedical.com

Authorized Vitrea distributor:

